

GaAs MMIC Monolithic Integrated 0 Degree Power Divider , 4-12 GHz

Performance characteristics

- Frequency range: 4-12 GHz
- Insertion loss : 1.2 dB
- Isolation: 18dB
- Phase imbalance: 3 degrees
- Amplitude imbalance: 0.1dB
- 50Ohm input / output
- 100% on-wafer testing
- Chip size: QFN 4X4

Product Introduction

The GPD-0412-CQ4 monolithic integrated 0 - degree power divider has low insertion loss, good isolation , low phase imbalance, low amplitude imbalance and other characteristics in the frequency range of 4 ~ 12 GHz , and is very suitable for microwave hybrid integrated circuits and multi-chip modules. This chip adopts a 4 x 4 mm ceramic surface mount package, which can achieve airtight packaging. The surface of the pin pad is gold-plated and is suitable for reflow soldering installation.

Use restriction parameter ¹

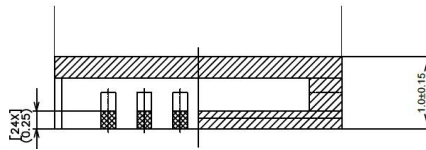
Maximum input power	+40dBm
Operating temperature	-55 ~ +85°C
Storage temperature	-65 ~ +150°C

【1】 Exceeding any of these maximum limits may cause permanent damage.

Electrical performance parameters (TA = +25°C)

Index	Minimum	Typical Value	Maximum	Unit
Frequency Range	4-12			GHz
Insertion loss	-	1.2	-	dB
Insertion loss fluctuation		± 0.15		dB
Isolation	-	18	-	dB
Phase imbalance	-	3	-	degree
Amplitude imbalance	-	0.1	-	dB
Input return loss	-	15	-	dB
Output return loss	-	16	-	dB

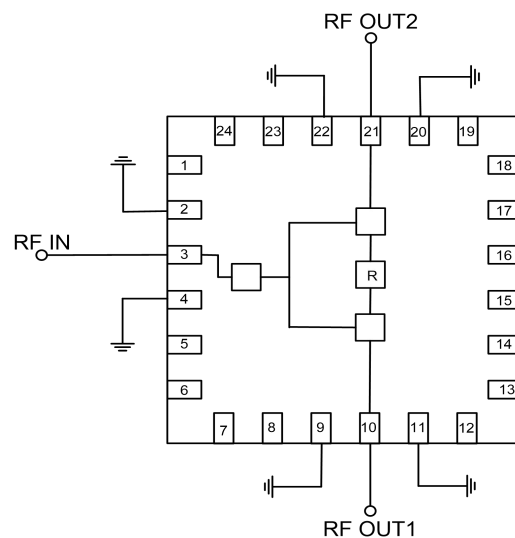
GaAs MMIC Monolithic Integrated 0 Degree Power Divider , 1-9 GHz



Side View

All units in the figures are millimeters .

Recommended assembly drawing



Pin Definition

Bonding point number	Function Symbol	Functional Description
3	RFIN	RF signal input terminal
10, 21	RFOUT	RF signal output terminal
2, 4, 9, 11, 20, 22	GND	The pins need to be well grounded to the RF and DC grounds
Chip bottom	GND	The bottom of the chip needs to be well grounded to RF and DC
Other	NC	The pin is floating and can be grounded

Precautions for use

- Sealing material : Ceramic material that meets ROHS standards
- Lead frame material: copper alloy
- Lead surface plating: gold, gold layer thickness greater than 1.5um
- Maximum reflow peak temperature: 260 °C